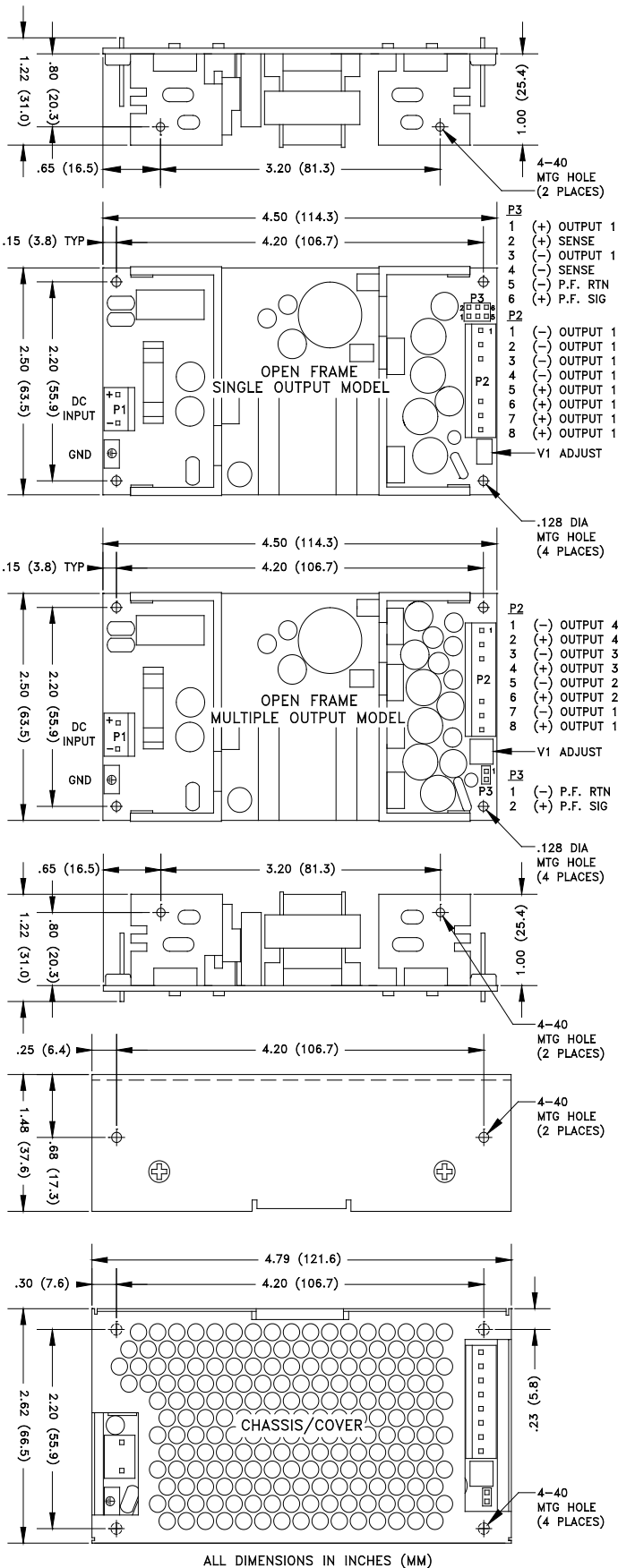


DC4-70 SERIES MECHANICAL SPECIFICATIONS



APPLICATIONS INFORMATION

- Each output can deliver its rated current but Total Output Power must not exceed 70W as determined by the cooling method.
- Generally, adequate cooling is provided when semiconductor case temperatures do not exceed 70°C rise and transformer temperature does not exceed 60°C rise at any specified ambient temperature.
- Sufficient area must be provided around power supply to allow natural movement of air to develop in convection-cooled applications.
- This product is intended for use as a professionally-installed component within information technology, industrial, and medical equipment and is not intended for stand-alone operation.
- A minimum load of 10% is required on Output 1 to ensure proper regulation of remaining outputs.
- Peak-to-Peak Output Ripple and Noise is measured directly at the output terminals of the power supply, without the use of the probe ground lead or retractable tip (tip-and-barrel method), 20 MHz bandwidth.
- This product was type-tested and safety-certified using the dielectric strength test voltages listed in Table 6 of IEC 60601-1:2005. In consideration of Clause 8.8.3, care must be taken to insure that the voltage applied to a reinforced insulation does not overstress different types and levels of insulation. Primary and secondary-to-ground capacitors may need to be disconnected prior to performing a dielectric strength test on the power supply or the end product. It is highly recommended that the DC test voltages listed in DVB.1, Annex DVB of UL 60601-1 1st Edition are not exceeded during a production-line dielectric strength test of the assembled end product. Please consult factory for further information.
- This power supply has been safety-approved and final-tested using a DC dielectric strength test. Please consult factory before performing an AC dielectric strength test.
- Remote-Sense terminals may be used to compensate for cable losses up to 250mV (single output models only). The use of a twisted pair, decoupling capacitors and an appropriately-rated low-impedance capacitor connected across the load will increase noise immunity.
- Maximum screw penetration into bottom chassis mounting holes is 0.100 inches. Maximum screw penetration into side chassis mounting holes is 0.250 inches.
- Power Good feature provides a logic-high signal from an open collector transistor when DC input reaches minimum operating voltage.
- 300LFM minimum of airflow must be maintained one inch above all points of top-side components or cover when forced-air cooling is required.
- Total Power must not exceed 50W with convection cooling on open-frame models except where noted.
- Total Power must not exceed 70W with 300LFM forced-air cooling on open-frame models.
- Total Power must not exceed 40W with convection cooling and Chassis/Cover option.
- Total Power must not exceed 70W with 300LFM forced-air cooling and Chassis/Cover option.
- Rated 10A maximum with convection cooling.
- Rated 1.5A maximum with convection cooling.

CONNECTOR SPECIFICATIONS

P1	DC Input	0.156 friction lock header mates with Tyco 640250-3 or equivalent crimp terminal housing with Tyco 3-640706-1 or equivalent crimp terminal.
P2	DC Output (Single)	0.156 friction lock header mates with Tyco 770849-8 or equivalent crimp terminal housing with Tyco 3-640707-1 or equivalent crimp terminal.
P2	DC Output (Multiple)	0.156 friction lock header mates with Tyco 770849-8 or equivalent crimp terminal housing with Tyco 3-640707-1 or equivalent crimp terminal.
G	Ground	0.187 quick disconnect terminal.
P3	P.G./Sense (Single)	0.100 breakaway header mates with Molex 22-55-2061 or equivalent crimp terminal housing with Molex type 71851 or equivalent crimp terminal.
P3	Power Good (Multiple)	0.100 breakaway header mates with Molex 50-57-9002 or equivalent crimp terminal housing with Molex type 71851 or equivalent crimp terminal.