

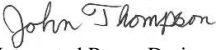
NXT-400 MULTI-FN SERIES OPERATING INSTRUCTIONS

INPUT RATING: 100-240VAC, 8A, 50-60 Hz.

OUTPUT RATING: 400 Watts Maximum Total Continuous Output Power.

MODEL LISTING:	MODEL	OUTPUT 1	OUTPUT 2	OUTPUT 3	OUTPUT 4
	NXT-400M-4002-FN	+5V/40A	+3.3-5V/15A	+12-15V/5A	-12-15V/5A
	NXT-400M-4003-FN	+5V/40A	+12-15V/10A	+12-15V/5A	-12-15V/5A
	NXT-400M-4004-FN	+5V/40A	+24-28V/5A	+12-15V/5A	-12-15V/5A
	NXT-400M-4005-FN	+24V/12.5A	-24-28V/5A	+12-15V/5A	-12-15V/5A
	NXT-400M-3001-FN	+5V/40A	+12-15/10A		-12-15V/5A
	NXT-400M-2001-FN	+5V/40A	+24-28V/5A		
	NXT-400M-2002-FN	+5V/40A	+12-15V/10A		
	NXT-400M-2003-FN	+12V/25A	-12-15V/10A		
	NXT-400M-2004-FN	+15V/20A	-12-15V/10A		
	NXT-400M-4002-FN	+5V/40A	+3.3-5V/15A	+12-15V/5A	-12-15V/5A

NOTES: 1. A suffix may be added to the model number to indicate the following optional configurations:
(IO-isolated outputs, PF-power fail warning, RE/SB- remote enable /standby output, BF- Type BF).

CE	<u>DECLARATION OF CONFORMITY</u>	UK CA
<p>Manufacturer: Integrated Power Designs, Inc. Manufacturer's Address: 300 Stewart Road, Wilkes-Barre, PA 18706 USA Product Type: Switchmode AC-DC Power Supply</p>		
<p>Declares all models listed above including all options are in compliance with the following European Community Directives:</p> <p>Low Voltage Directive 2014/35/EU of 26 February 2014 RoHS Directive 2015/863/EU of 31 March 2015</p> <p>As well as with the requirements set out in the Laws of the United Kingdom relating to and applying the following standards:</p> <p>Electrical Equipment (Safety) Regulations 2016 SI No. 1101 BS EN 62368-1:2014 Restriction of the Use of Certain Hazardous Substances in Electrical and Electronic Equipment Regulations 2012 SI No. 3032 + 2019 SI No.492</p> <p>In addition all models are pending approval to applicable requirements IEC 62368-1:2014, EN 62368-1:2014, IEC 60601-1:2005/A1:2012, EN 60601-1:2006/A1:2013.</p>		
<p>BY: John Thompson - President  PLACE: Integrated Power Designs 300 Stewart Road, Wilkes-Barre, PA 18706 USA DATE: May 10, 2023</p>	<p>EUROPEAN CONTACT: Compumess Elektronik GmbH Lise-Meitner-Strasse 1 85716 Unterschleißheim Telephone (089) 32 15 01-0</p>	<p>UK CONTACT: ALL PSU LTD Laser Quay, Culpeper Close Rochester Kent ME2 4HU Tel : 01634 725527</p>

CLASSIFICATION:

1. Protection against electric shock – Class I.
2. Protection against harmful ingress of water – IPX0 (Non-protected), ordinary.
3. Methods of sterilization- None.
4. Suitability for use in an oxygen rich environment – End user responsibility, not evaluated.
5. Mode of operation – Continuous

WARNING! An open internal fuse indicates a catastrophic failure of circuit component(s). Repair must be by authorized IPD personnel only.
RISK OF FIRE! Refer to fuse rating on power supply circuit board for rating.

WARNING! Hazardous voltages are present on some components, printed circuit board traces and heatsinks.
SHOCK HAZARD! Product may continue running for up to one minute and components may remain energized after AC power is removed.

INPUT FUSE: In consideration of clause 8.11.5 of IEC 60601-1:2005, this product includes a fuse in both the phase and neutral lead.

SEPARATION: Primary to Secondary creepage distance is 8mm minimum, clearance 6.5mm minimum (2MOPP). Primary to Ground creepage distance is 4mm minimum, clearance 3.2mm minimum (1MOPP). Secondary to Ground creepage distance is 3.0mm minimum, clearance 2.1mm minimum (Operational Insulation).

BF Suffix models Secondary to Ground creepage distance is 3.2mm minimum, clearance 3.2mm minimum (1MOPP).

Required separation must be maintained in the end product to preserve the established means of protection.

OUTPUTS: Outputs are not intended for patient connection. All outputs are ES1 under normal and single fault conditions unless otherwise indicated. Consult factory for BF Suffix option.

TEMPERATURES: The maximum operating temperatures of safety components as defined in the applicable safety standards must not be exceeded after installation in the end use equipment.

HIPOT: In consideration of IEC 60601-1:2005 Clause 8.8.3, care must be taken to insure the voltage applied to a reinforced insulation does not overstress different types and levels of insulation. Breakdown of basic insulation and catastrophic failure of the power supply may result if a test voltage of greater than 1800 VAC is applied between primary and secondary circuits. Each isolating component is factory tested at 4000 VAC minimum prior to installation. Secondary to ground capacitors may need to be disconnected prior to performing a dielectric strength test on the power supply or the end product.

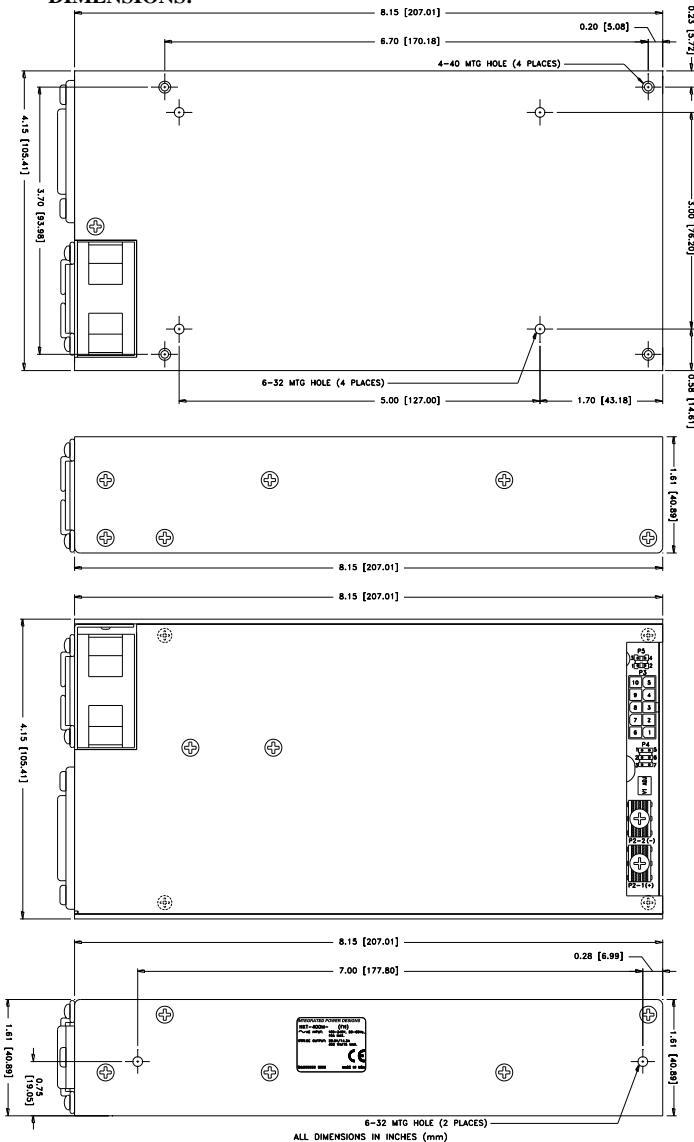
INSTALLATION: These power supplies are considered components intended for professional installation into end use equipment. Only use an AC line cord with appropriate IEC320 connector and recommended DC output mating connector. Insure adequate spacing is provided in end use equipment for proper cooling fan air flow.

EMISSIONS: This product was tested for compliance with EN 55022 and EN 55011 Class B conducted and radiated emissions using the techniques listed below and non-inductive load resistors to simulate operation in a typical installation. All or a combination of the following requirements may be necessary to insure compliance in the end use equipment.

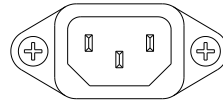
1. Twisted pair I/O cables.
2. Use of ferrite beads on I/O cables at power supply end.
3. Load shielded or mounted on grounded plane.
4. Grounded output returns.

BF Suffix models have not been evaluated for EMC requirements per 60601-1-2. Compliance must be determined in end product application.

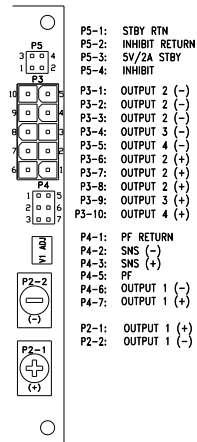
DIMENSIONS:



CONNECTOR SPECIFICATIONS:



AC INLET: IEC 320 C14 mates with AC power cable C13 or equivalent AC power cable.



P5: .100 friction lock header mates with Molex 22-55-2041 or equivalent crimp terminal housing with Molex 71851 or equivalent crimp terminal.

P3: 5566 Mini-Fit Jr. header mates with 5557 Mini-Fit Jr. or equivalent crimp housing with 5556 Mini-Fit or equivalent Crimp Terminal.

P4: .100 breakaway header mates with Molex 22-55-2061 or equivalent crimp terminal housing with Molex type 70058 or equivalent crimp terminal.

P2: 6-32 screw down terminal mates with #6 ring tongue terminal. (10 in-lb Max).

OUTPUT VOLTAGE ADJUSTMENT:

